

BRIDGING TRIVIA

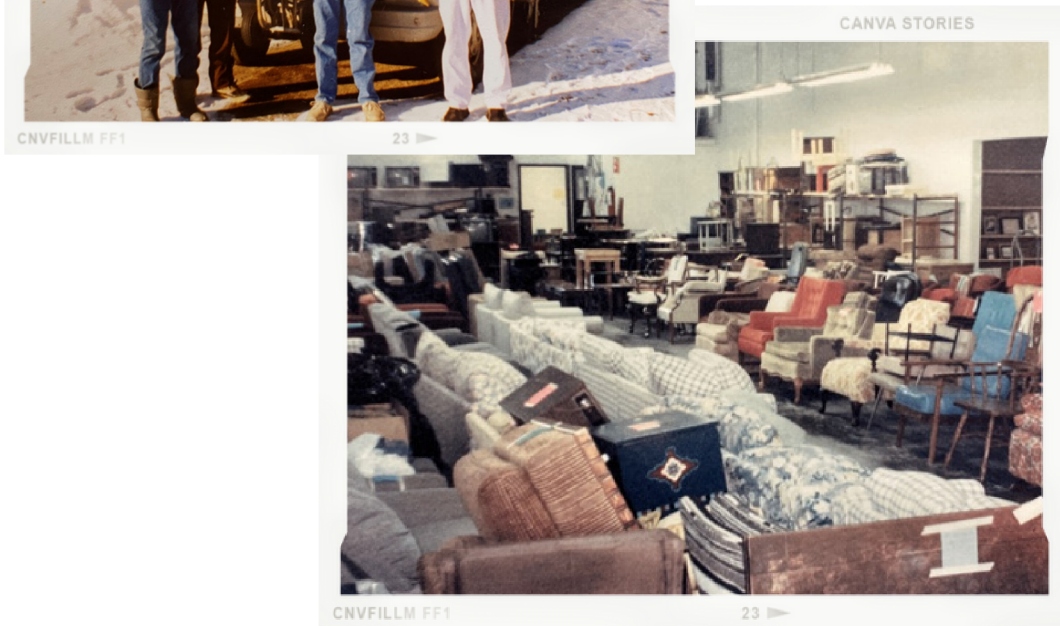
More than **three decades** of serving!

How much history do you know? *Answers on the back.*

1 What year did Bridging move in to 26,000 square feet at 201 West 87th Street?	
2 For three years, Bridging operated a warehouse in what central Minnesota city?	
3 What year did Bridging-Roseville serve its first client?	
4 Volunteers have donated more than 1.5 million hours since 1987? True or false?	
5 In 1999, Bridging accepted cribs. True or false?	
6 What year did Bridging begin charging a fee for residential pickups?	
7 What appliance did Fran give away at Pax Christi before he moved "Bridging ministries" out of the church?	
8 Founder Fran <i>last</i> slid down Buck Hill for the <i>Bedrace for Bridging</i> at the age of _____.	
9 What year did the Bring a Blanket collection event begin? Bonus: who was the sponsor?	
10 Fran jumped out of a cake for the silver anniversary Gala in what year?	
11 What year did Bridging serve household number 100,000?	
12 What year did Bridging receive its first donated 10-foot cube truck?	
13 Bridging operated in an estate store for five years in Bloomington. True or false?	
14 Bridging staff and volunteers are _____!	

BRIDGING TRIVIA

More than **three decades** of serving!



1. 1997
2. Sauk Rapids
3. 2006
4. True
5. False
6. 2009
7. Oven
8. 85
9. 2001, Subway
10. 2012
11. 2020
12. 1993
13. True
14. THE BEST!